



# Mainpac Project Linker

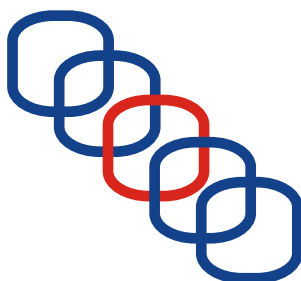


The interface between Mainpac and Microsoft Project

**mainpac**  
appreciate your assets

This interface allows users to export maintenance jobs from Mainpac into Microsoft Project where they can be scheduled to most effectively use available resources. MS Project has advanced capabilities for achieving the optimum use of resources.

Once scheduled, jobs are imported back into Mainpac for issuing and completion in the normal manner.



## Graphics simplify the scheduling of maintenance workload

A key feature of MS Project is the capability to see jobs and schedules represented with greater clarity through the use of GANTT charts.

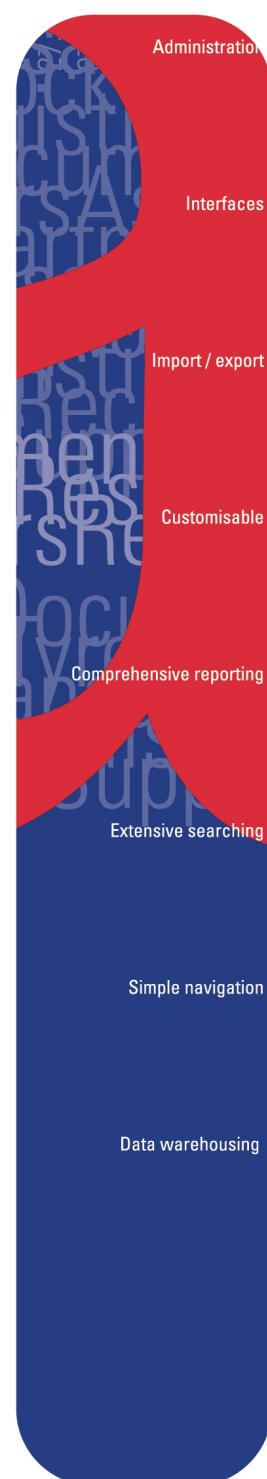
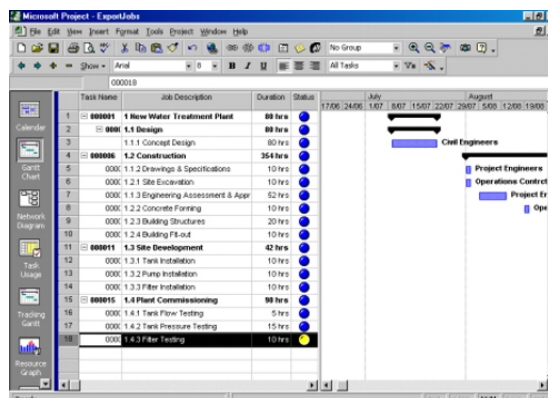
For example, the allocation of maintenance resources required for a major plant project, such as a shutdown or capital expenditure event can best be seen when the required maintenance jobs are presented graphically against the skills and time available.

## Easy options

Typical fields to export are *job number (non-editable)*, *job description*, *schedule date*, *duration*, *resources*, *work plan* and a field to provide grouping in a Project. This allows the easy modification of jobs using Microsoft Project.

Features include:

- Exporting from Mainpac can be called from within Mainpac.
- Importing to Mainpac can be called from within Microsoft Project.
- A project file to be exported can be selected from a template.
- The export of non-requested/planned/issued jobs can be restricted to prevent updating of closed and costed jobs.



Mainpac Pty Ltd  
ABN 50 095 976 177  
[Info@mainpac.com.au](mailto:Info@mainpac.com.au)  
[www.mainpac.com.au](http://www.mainpac.com.au)

**Sydney**  
Suite 201 / 10-12 Clarke Street  
Crows Nest NSW 2065  
T +61(02) 9438 1411  
F +61(02) 9436 2423

**Adelaide**  
Development Office  
T +61(08) 8431 9818  
F +61(08) 8431 9819

**Melbourne**  
T +61(03) 9321 0184  
F +61(03) 9321 0100

**Brisbane**  
T +61(07) 3252 4550  
**Perth**  
T +61(08) 8431 9818